



1.8m/6ft Ultra High XPD Performance Dual Polarized Microwave Parabolic Antenna

Our Product Introduction

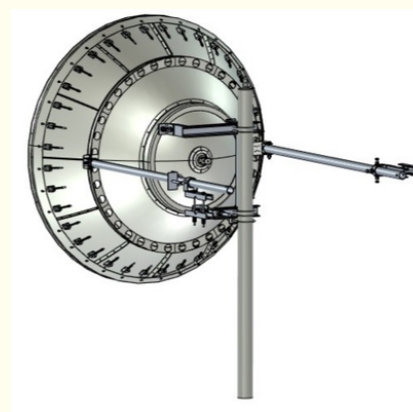
Basic Information

- Place of Origin: China
- Brand Name: Famous
- Certification: CE ISO9001
- Model Number: XPD Antenna
- Minimum Order Quantity: 1 SET
- Price: Negotiable
- Packaging Details: Standard export packaging/customizable packaging
- Payment Terms: T/T L/C



Product Specification

- Name: XPD Antenna
- Diameter Of Mounting Pole: $\phi 114$ Mm
- Fine Azimuth Adjustment: Coarse 360° Fine $\pm 5^\circ$
- Fine Elevation Adjustment: Fine $\pm 5^\circ$
- Wind Velocity Operational: 180km/h
- Wind Velocity Survival: 200km/h
- Ice-load: 25.4 Mm
- Operational Temperature: $-55 \sim +70$
- Highlight: **XPD Performance Dual Parabolic Antenna,
1.8m Dual Parabolic Antenna,
6ft Microwave Parabolic Antenna**



for more products please visit us on mw-antenna.com

Product Description

1.8m/6ft Ultra High XPD Performance Dual-Polarized Microwave Parabolic Antenna

- Our patent split-lobe microwave communication parabolic antenna for large diameter, which can save packaging and transportation costs greatly without any quality compromised
- High performance ultra high XPD parabolic antennas – Excellent performance for a wide range of applications
- Simple Assembly – Minimal required assembly simplifies installation on site and guarantees “factory-tested” quality
- Our patent split-lobe microwave communication parabolic antenna for large diameter, which can save packaging and transportation costs greatly without any quality compromised
- High performance ultra high XPD parabolic antennas – Excellent performance for a wide range of applications
- Simple Assembly – Minimal required assembly simplifies installation on site and guarantees “factory-tested” quality

Electrical performance:

Antenna Model	Antenna Size(m)	Frequency (GHz)	Gain(dBi)			3dB BW (deg)	XPD (dB)	VSWR	F/B ratio (dB)	ISO
			Low	Mid	Top					
CMP183DC	1.8	3.6-4.2	33.8	34.8	35.3	3.1	40	1.15	60	45
CMP184DC	1.8	4.4-5.0	35.7	36.3	36.8	2.6	40	1.15	61	45
CMP186WDC	1.8	5.925-7.125	38.4	39.4	39.8	1.8	40	1.1	65	45
CMP187WDC	1.8	7.125-8.5	40.0	40.8	41.5	1.5	40	1.1	66	45
CMP1810WDC	1.8	10-11.7	43.0	43.7	44.3	1.1	40	1.1	71	45
CMP1813WDC	1.8	12.2-13.25	45.0	45.2	45.3	0.9	40	1.1	70	45
CMP1815DC	1.8	14.4-15.35	46.1	46.3	46.6	0.8	40	1.1	71	45

Mechanical performance:

Diameter of Mounting Pole	Φ114 mm
Fine Azimuth Adjustment	Coarse 360° Fine ±5°
Fine Elevation Adjustment	Fine ±5°
Wind Velocity Operational	180km/h
Wind Velocity Survival	200km/h
Ice-load	25.4 mm
Operational Temperature	-55~ +70

- 1.The low/mid/high gain has≤-0.5dBi tolerance is within the normal range;
- 2.F/Bradio:Denotes highest radiation relative to the main beam,at 180°±40°,across the band.Production antennas do not exceed rated values by more than 2 dB unless stated otherwise;



Wuxi Famous Communication Equipment Co., Ltd.

+86 13255118228

eric@mw-antenna.com

mw-antenna.com

Room 803, Wisdom Building, No. 18 Wisdom Road, Huishan Economic Development Zone, Huishan District, Wuxi City, Jiangsu Province, China